

## Specifications

Mode	HG400VW	HG400 Pro
Door	SS-Door with Observation Window	SS-Door with Observation Window
Blending volume (mL)	50-400	50-400
Speed (rpm)	10-300	60-360
Variable blending time	1 min to 24h	1 second to 59min 59 s
IP code	IP30	IP30
Exterior dimension (W x D x H, cm)	45 x 21 x 24	45 x 28 x 30
Interior dimension (W x D x H, cm)	10 x 19 x 22	10 x 19 x 22
Power	100-240V /50-60Hz	100-240V /50-60Hz

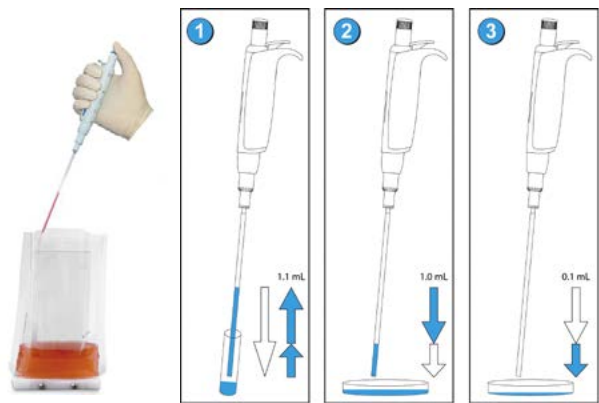
## Accessories for flapping homogenizer

### Dilution pipette Acura® manual 810

Air displacement pipette with two pre-calibrated steps allows subsequent pipetting of 1 and 0.1 mL of the same liquid. Metal nozzle fits long straw tips to aspirate from narrow or deep reservoirs (i.e. Stomacher®bags). Ideal alternative to the graduated glass pipettes when performing serial 1:10 dilutions in bacteriology.

#### Features

- > Two pre-calibrated fixed volumes – no setting required
- > Smooth activation, excellent ergonomics
- > Interchangeable PE nozzle protection filter
- > Justip™ system for height adjustment of the tip ejector
- > Independent calibration for each volume
- > Easy maintenance, cleaning and disinfection
- > Fully autoclavable 121°C / 250 °F



#### Simple operation

1. Depress plunger button in full, then release slowly to aspirate 1.1 mL
2. Depress plunger button to first stop, thus dispensing 1 mL in Petri dish
3. Depress plunger button to second stop, thus dispensing residual 0.1 mL in next Petri dish

## Ordering information

Order No.	Packaging	Description
810.1100	1 / pk	1 mL / 0.1 mL ①
313.1119.40	40 x 25 / pk	Straw tips, polypropylene, sterilized (L: 190 mm, Ø:4 mm) ②
322.810	100 / pk	Nozzle protection filter, PE material ③



## Order information

Order No.	Name	Capacity	Content
2125C25	Standard bag	400 mL	25 per bag ①
2150C25	Standard bag	400 mL	50 per bag ①
4125C15	Full-page filter bag	400 mL	25 per bag ②
6125C15	Lateral filter bag	400 mL	25 per bag ③
SMCLIP	Clip for sterilization bags		④
9125R15	Rack for sterilization bags		Position: 10 ⑤

